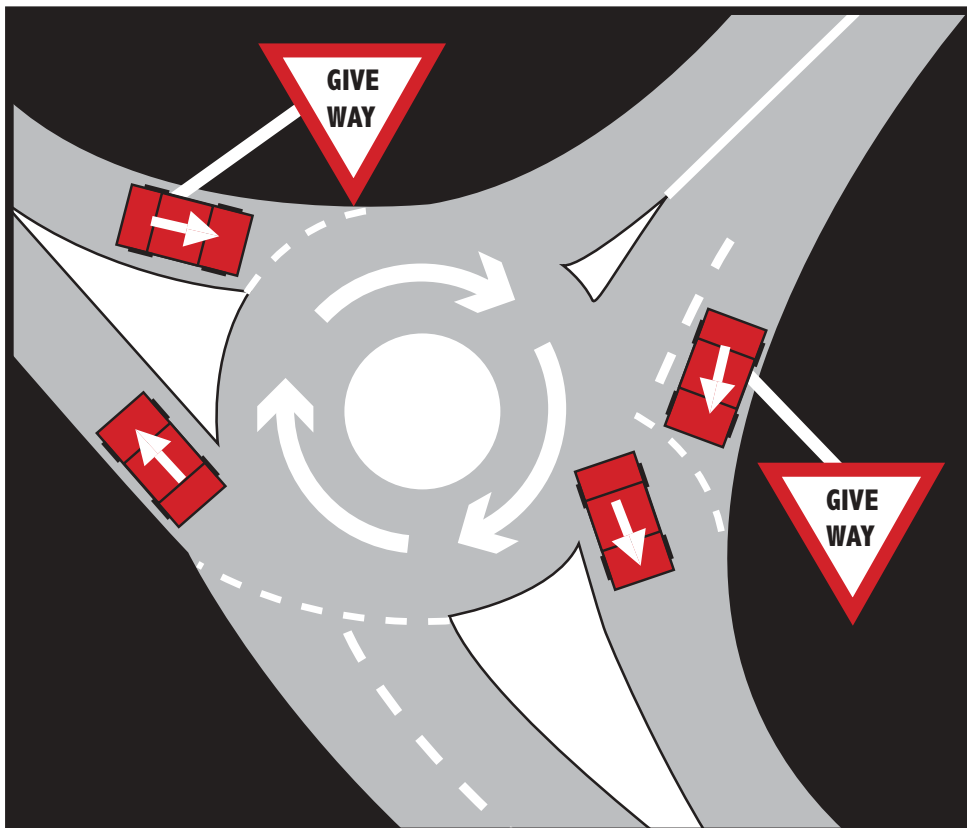


# Mini-Roundabouts

## Here's How to Use Them!

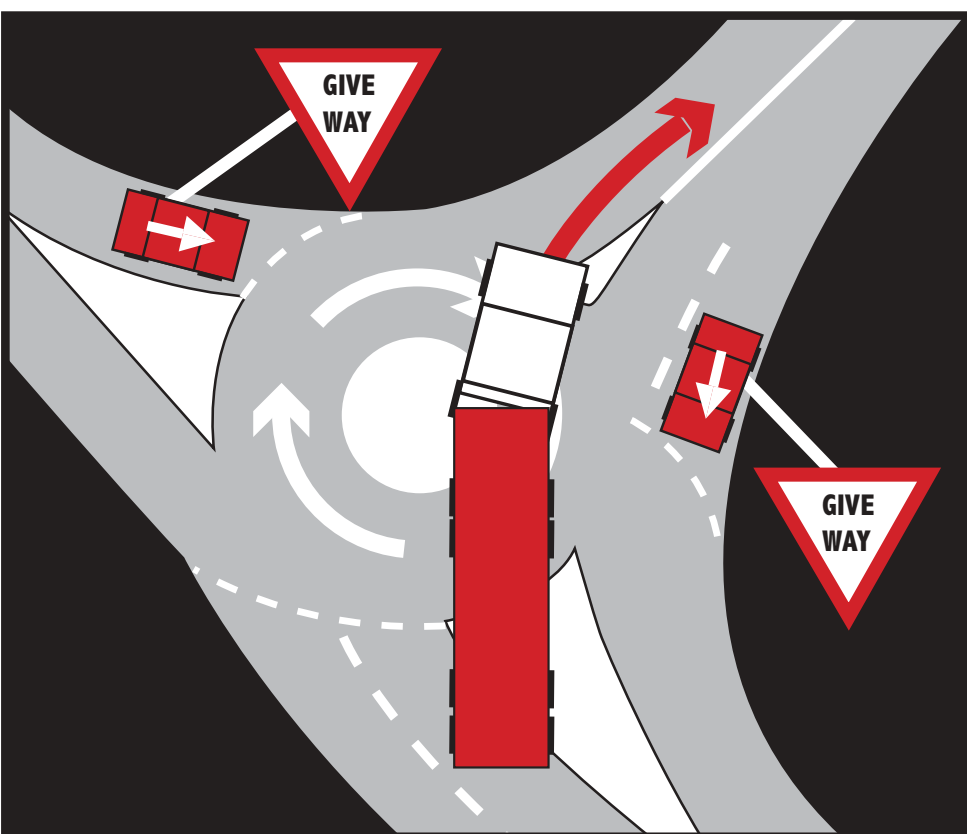


### Regular-Sized Vehicles

All regular-sized vehicles such as cars, jeeps & trucks must pass to the left of the painted circle.



Photo illustration of typical mini roundabout



### Oversized or Heavy-Load Vehicles

Oversized or heavy-load vehicles such as flatbed trucks and fire trucks may drive over all or part of the painted circle if necessary.



### NEW Mini Roundabout Sign!

### Other Reminders

- Traffic circulates in a clockwise direction on all roundabouts.
- Always use your signal light and check your mirrors.
- Never speed!



Cayman's first mini-roundabout is being constructed at the end of the new section of Goring Avenue, which connects to Elgin Avenue.